



3 RAMPART AVENUE GLEN WAVERLEY, VIC

4 2.5 4

Take a View to a Rewarding Family Future

High, wide and mountain-view, this elevated property is the height of family value! Elevated behind a sweeping 15.78m frontage on around 658m² this highset four bedroom, 2.5 bathroom, dual zone home takes a view to great family living with vast L-shaped lounge-dining up in the treetops, great ground-floor living flowing out to the garden and spectacular views to the Dandenongs on both levels!~

Just up the hill from the parklands of the Dandenong Creek Trail, around the corner from Primary and Secondary Schools and minutes from The Glen Shopping Centre, this is an elevated opportunity for families and developers alike.

\$1,175,000.00

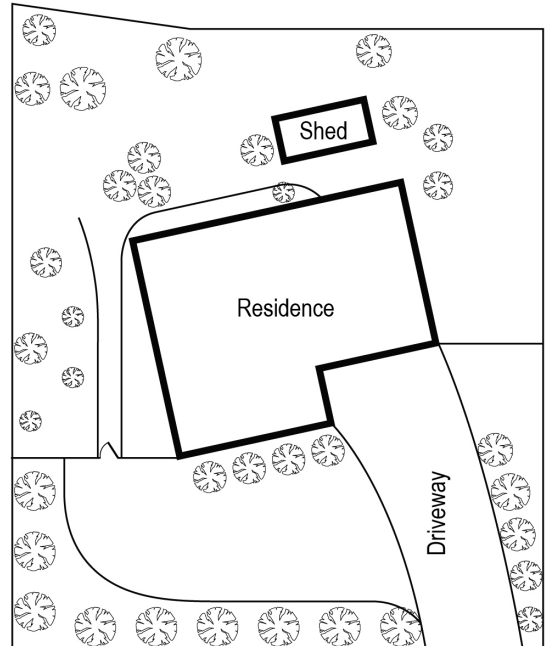
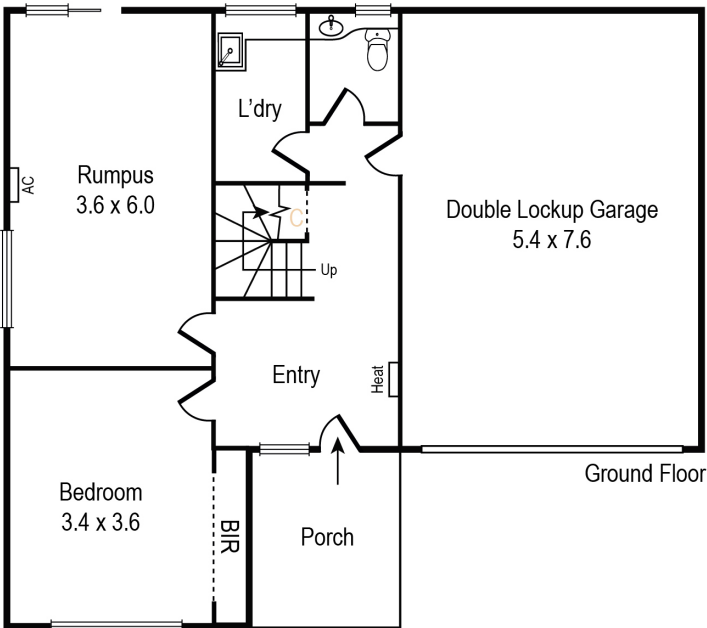
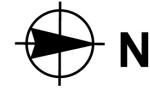
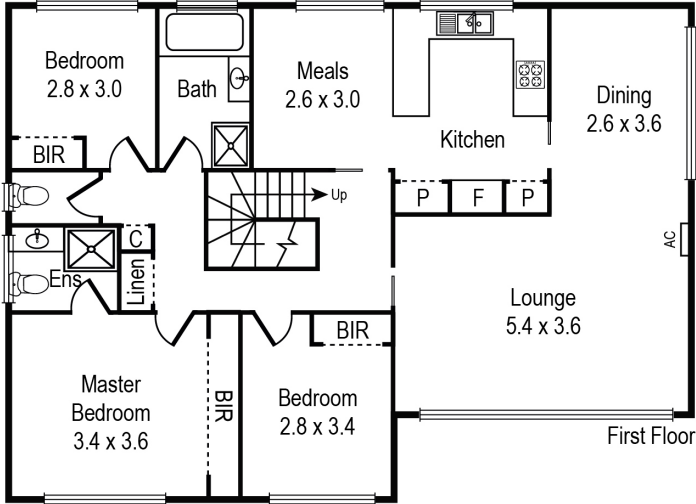
Type : House
Sold Date : Saturday, 5th October 2019
Land : 658 m²



Con Nicolis

0416271411

3 Rampart Ave, Glen Waverley



Whilst every attempt has been made to ensure the accuracy of this floorplan, measurements of doors, windows, rooms and any other items are approximates only. The producer or agent cannot be held responsible for any errors, omissions or misstatements. This plan is for illustrative purposes only and should be used as such.