



2/1161 Nepean Hwy HIGHETT, VIC



The Easiest Setting for a Busy Lifestyle

Offering sought-after ground floor accessibility and the ultimate in daily convenience, this smart apartment provides the perfect lock and leave opportunity for today's busy lifestyles. Moments to Highett's restaurants & station and close to the open green expanses of both Highett & Sir William Fry reserves, there is also Southland's retail, entertainment and transport hub within the gentlest walk.

\$450000

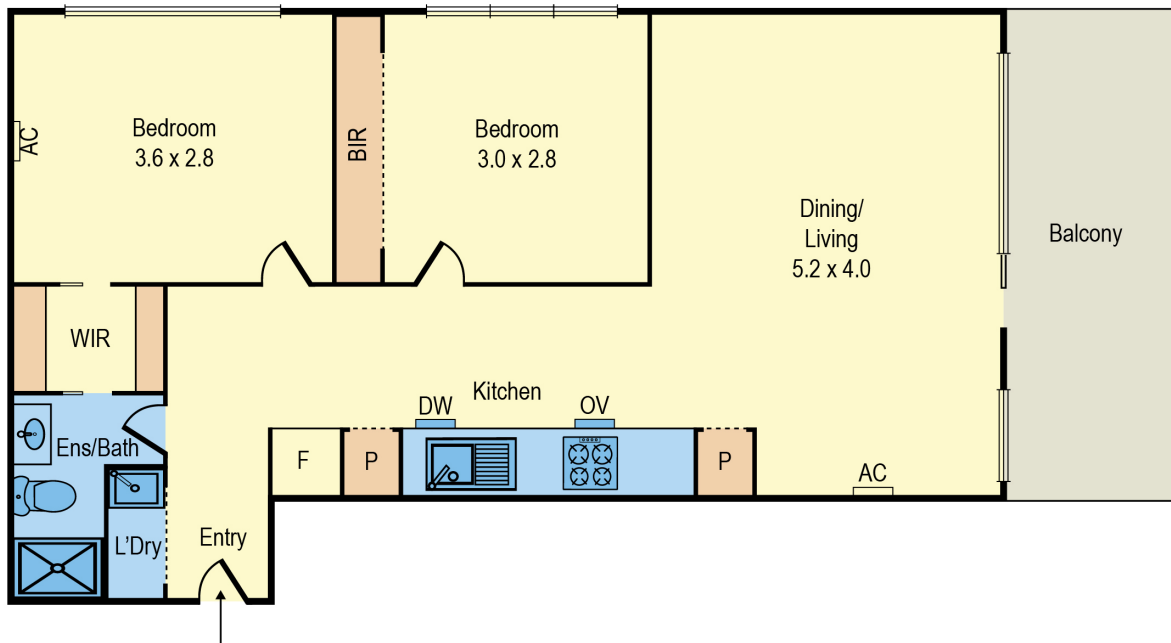
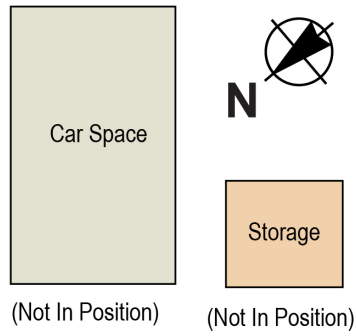
Type : Apartment
Sold Date : Wednesday, 16th November 2022



Con Nicolis

0416271411

Unit 2, 1161 Nepean Hwy, Highett



Whilst every attempt has been made to ensure the accuracy of this floorplan, measurements of doors, windows, rooms and any other items are approximates only. The producer or agent cannot be held responsible for any errors, omissions or misstatements. This plan is for illustrative purposes only and should be used as such.